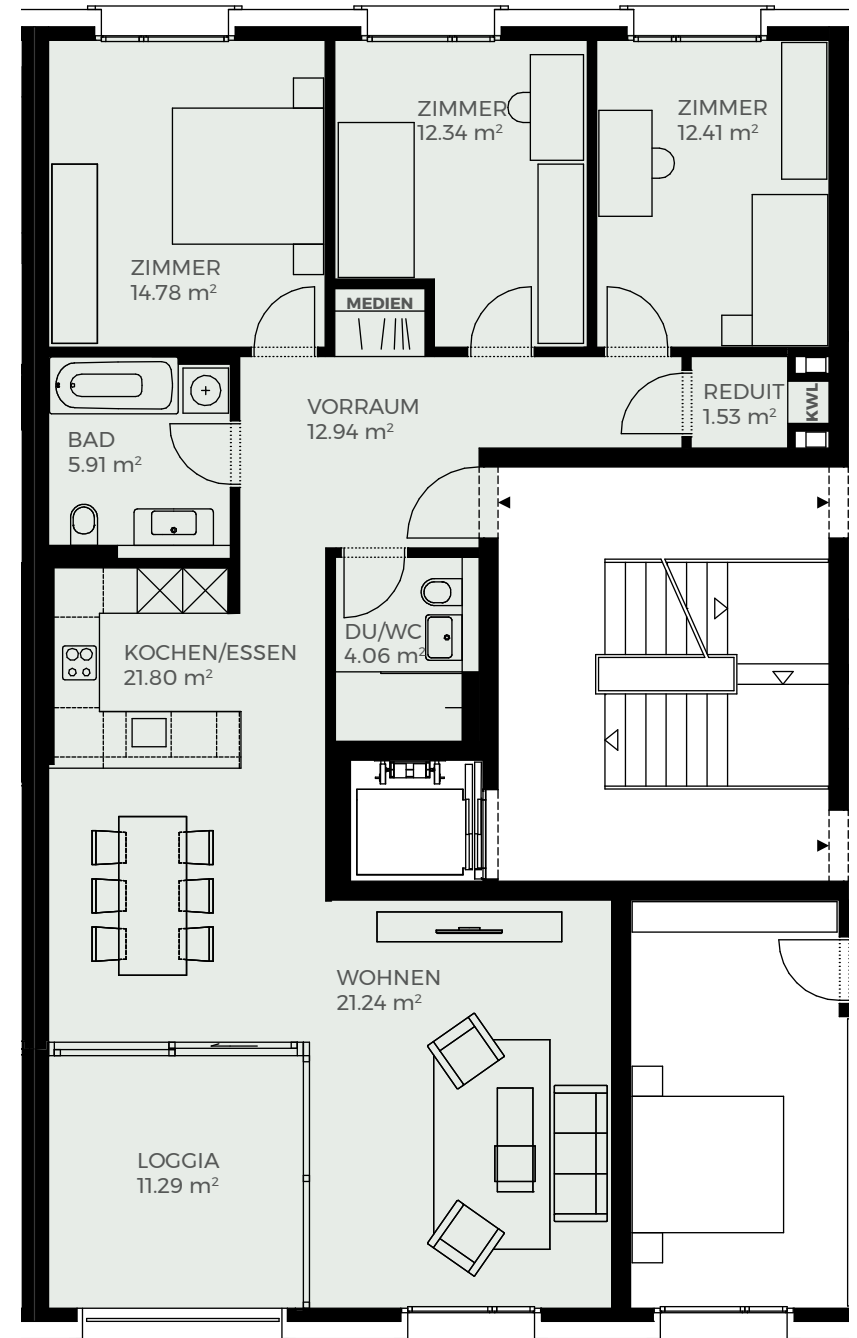
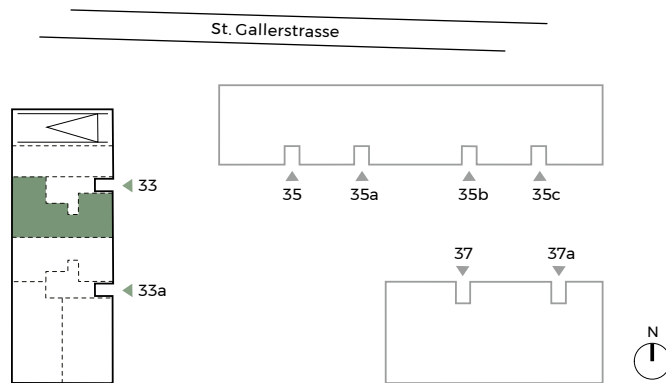
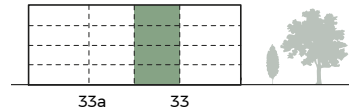


HAUS 33

4½-Zimmer-Wohnung Typ 4C

ca. 108 m² Wohnfläche
ca. 11 m² Loggia

EG	D 02.0002
1.OG	D 02.0102
2.OG	D 02.0202
3.OG	D 02.0302



Masstab 1:100



Beratung und Vermietung

KG Immobilien GmbH, Karin Gsell
Oberer Graben 24, 8400 Winterthur
052 235 39 39, office@kg-immobilien.ch