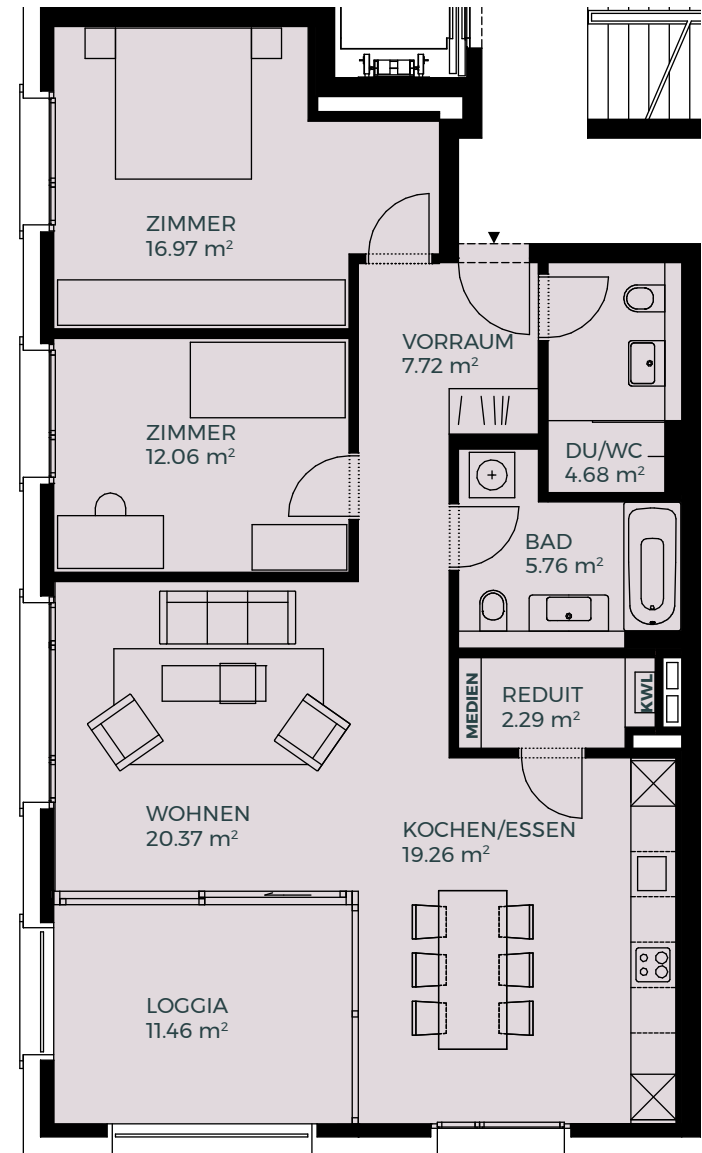
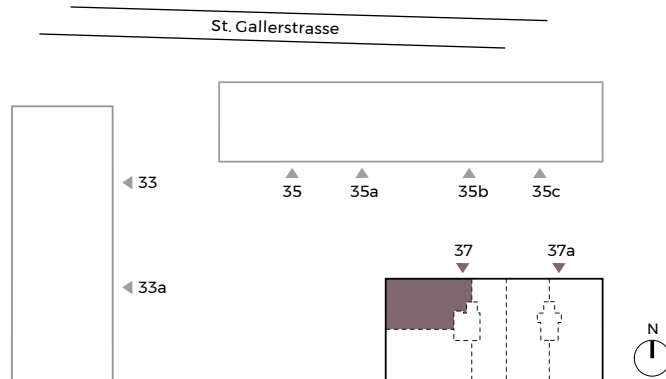
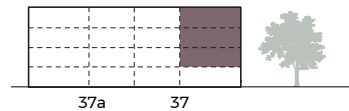


# HAUS 37

## 3½-Zimmer-Wohnung Typ 3F

ca. 90 m<sup>2</sup> Wohnfläche  
ca. 12 m<sup>2</sup> Loggia

1.OG D 08.0101  
2.OG D 08.0201  
3.OG D 08.0301



Masstab 1:100



### Beratung und Vermietung

KG Immobilien GmbH, Karin Gsell  
Oberer Graben 24, 8400 Winterthur  
052 235 39 39, office@kg-immobilien.ch