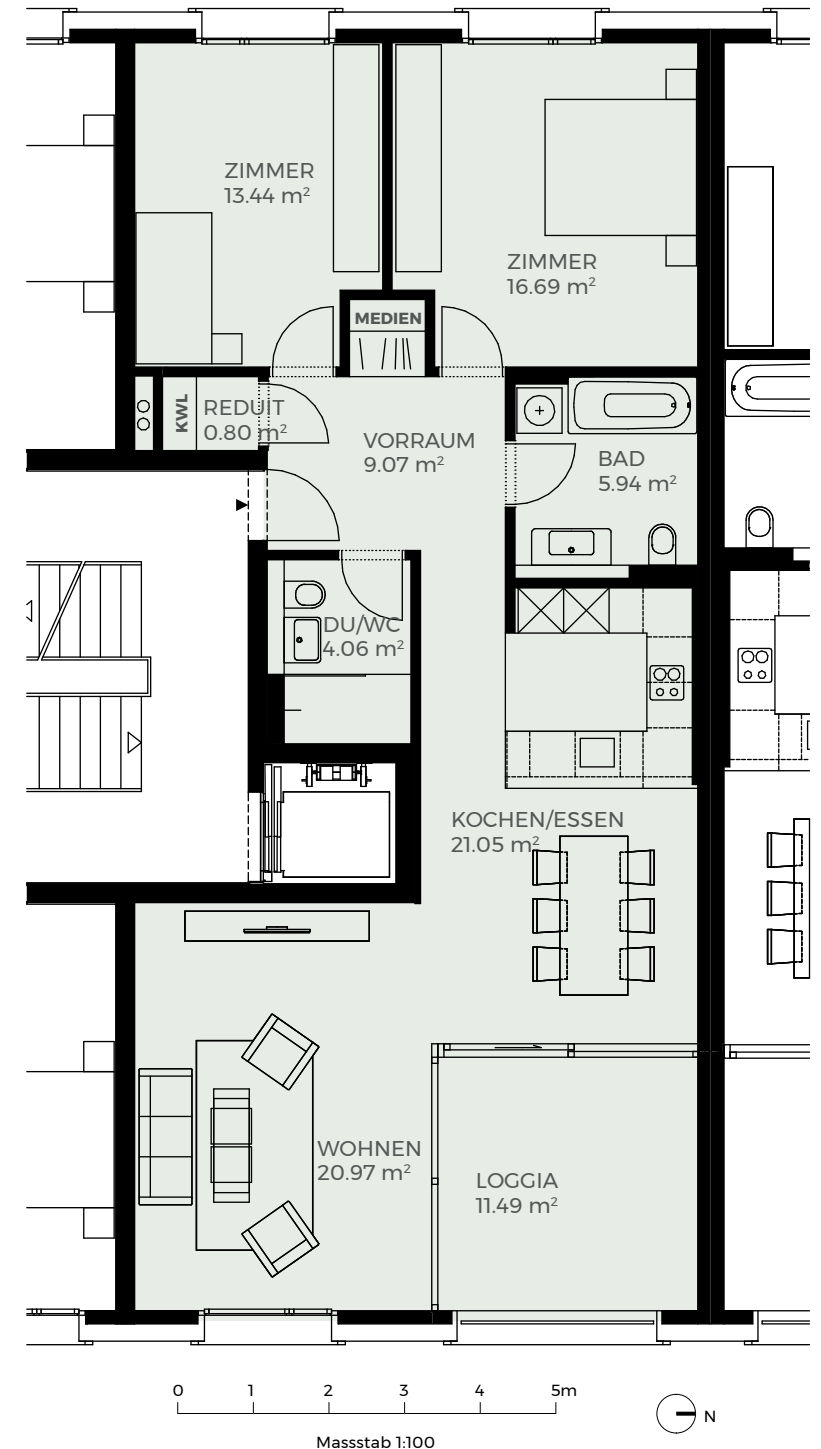
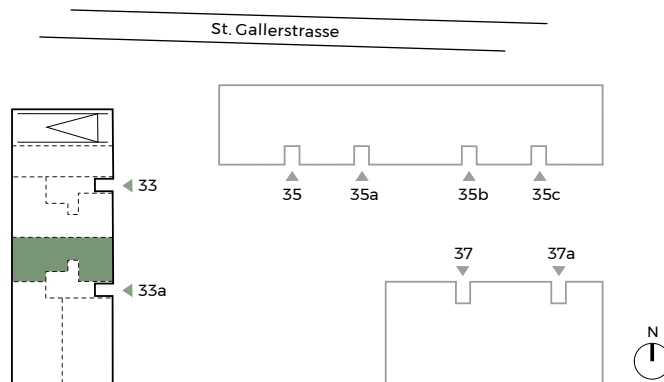
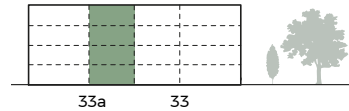


HAUS 33a

3½-Zimmer-Wohnung Typ 3A

ca. 93 m² Wohnfläche
ca. 12 m² Loggia

EG	D 01.0001
1.OG	D 01.0101
2.OG	D 01.0201
3.OG	D 01.0301



Beratung und Vermietung

KG Immobilien GmbH, Karin Gsell
Oberer Graben 24, 8400 Winterthur
052 235 39 39, office@kg-immobilien.ch